



Garden Adventure Ltd

19 Manor Road
East Grinstead
West Sussex RH19 1LP
01342 300146

www.gardenadventure.co.uk



More wood – better price!



Oxford

Oxford* 4x3 – **UK2800334**
 Oxford* 5x4 – **UK2800335**
 Oxford floor kit – **UK280031**

- Wall thickness 34 mm T&G;
- Wall boards are flat faced with softly rounded edges;
- Double grooved interlock



* floor kit and bitumen tiles are extra

(34 mm)



Brighton

3 x 3 m (2,82 x 2,82) – **UK10020600**
 4 x 3 m (3,82 x 2,82) – **UK10020601N**

Basement size is shown in brackets.

- Wall boards are flat faced;
- Double grooved interlock;
- Glazed window and double door with decorative beading;
- Roof and floor boars 20 mm T/G;
- Canopy – 40 cm;
- This cabin available with a maximum ridge height of 2.5 m on special request.



Roofing shingles and veranda are supplied as optional extras.

(34 mm)



Derby

4,5 x 3 m (4,32 x 2,82) – **UK100700802**

Basement size is shown in brackets.

- Wall thickness 34 mm T&G;
- Wall boards are flat faced with softly rounded edges;
- Double grooved interlock;
- The corbel of the roof around the whole house;
- Canopy;
- Two premises with separate entries;
- Double door + side shed door;
- The shed includes the floor.



* Shingles are supplied as optional extras

(34 mm)

Nida



5 x 3 m (4,83 x 2,83) – **UK100610702**

Basement size is shown in brackets.

- Wall thickness 44 mm;
- Double glassed windows and doors;
- Bitumen roofing felt is included;
- Ridge height up to 2,5 m.



No planning permission required in UK*



(44 mm)

Wales



3 x 3 m (2,84x2,84) – **UK100489501**

3 x 4 m (2,84x3,84) – **UK100489511**

4 x 3 m (3,84x2,84) – **UK100489521**

4 x 4 m (3,84x3,84) – **UK100489531**

4 x 5 m (3,84x4,84) – **UK10048954N**

5 x 4 m (4,84x3,84) – **UK10048955**

5 x 5 m (4,84x4,84) – **UK10048956N**

Basement size is shown in brackets.

- Wall thickness 34 mm T&G;
- Wall Boards are flat faced with softly rounded edges;
- Double grooved interlock;
- The corbel of the roof around the whole house;
- Large canopy;
- The cabin includes the floor;
- The doors and the windows can be supplied either left, or right-hand.



Note: Wales 3x3 m and 3x4 m has single window in front.
Roofing shingles and veranda are supplied as optional extras.



(34 mm)

Luton



3 x 2 m (2,84x1,84) – **UK10040012**

3 x 3 m (2,84x2,84) – **UK100400091**

3 x 4 m (2,84x3,84) – **UK10040036TD**

4 x 3 m (3,84x2,84) – **UK10040032**

4 x 4 m (3,84x3,84) – **UK100400101**

4 x 5 m (3,84x4,84) – **UK10040041**

5 x 4 m (4,84x3,84) – **UK10040038**

5 x 5 m (4,84x4,84) – **UK100400201**

Basement size is shown in brackets.

- Wall thickness 34 mm T&G;
- Large canopy;
- Wall Boards are flat faced with softly rounded edges;
- Double grooved interlock;
- The corbel of the roof around the whole house;
- Glazed windows with original decorative beading;
- The cabin includes the floor;
- The doors and the windows can be supplied either left, or right-hand.



Roofing shingles and veranda are supplied as optional extras.
Note: Luton 3x3 m and 3x4 m has single window in front.

This cabin available with a maximum ridge height of 2.5 m on special request.

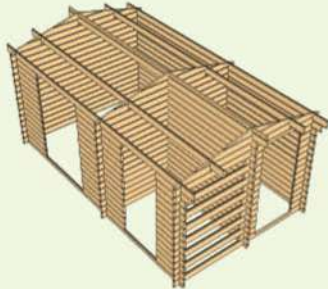


(34 mm)

Nadine

Nadine 5x3 – **UK100610704**

- Wall thickness 34 mm,
- Double grooved interlock with wind protection
- Cabin includes T/G boards for roof
- Extra room and space can be fitted left, or right-hand side.



(34 mm)

Alpina 4x3

34 mm - **UK28001090225**

44 mm* - **UK28001090215**

Basement size required: 3.84 x 2.84

- Canopy/porch 0.80 m
- The cabin includes floor and roof boards - 20 mm T&G
- There are one single window in the front and one on the side wall .
- Total high of the cabin ~ 2,5 m. Planning permission is not necessary in UK.



(34 mm)



(44 mm)

*Alpina 4x3 in 44 mm comes with double glazed windows and door.
*Roofing shingles are supplied as optional extras

Alpina 5x4

34 mm - **UK280010901534**

44 mm* - **UK280010901**

Basement size required: 4.84 x 3.84

- Canopy/porch 0.80 m
- The cabin includes floor and roof boards - 20 mm T&G
- There are one double window in the front and one on the side wall
- Total high of the cabin ~ 2,5 m. Planning permission is not necessary in UK.



(34 mm)



(44 mm)

*Alpina 5x4 in 44 mm comes with double glazed windows and door
*Roofing shingles are supplied as optional extras

Liverpool



- 3 x 3 m (2,84x2,84) – **UK10061020N**
- 3 x 4 m (2,84x3,84) – **UK10061040**
- 4 x 3 m (3,84x2,84) – **UK10061050N**
- 4 x 4 m (3,84x3,84) – **UK10061010**
- 4 x 5 m (3,84x4,84) – **UK10061070**
- 5 x 4 m (4,84x3,84) – **UK10061080**
- 5 x 5 m (4,84x4,84) – **UK10061060N**

Basement size is shown in brackets.

- Wall thickness 44 mm T&G;
- Wall boards are flat faced with softly rounded edges;
- Double grooved interlock;
- The corbel of the roof around the whole house;
- Large canopy;
- Double glazed windows and door;
- The cabin includes the floor;
- The doors and the windows can be supplied either left, or right-hand.



Log Cabins

Note: Liverpool 3x3 m and 3x4 m has single window in front. Roofing shingles and veranda are supplied as optional extras. This cabin available with a maximum ridge height of 2.5 m on special request.



(44 mm)

Devon



- 3 x 3 m (2,84 x 2,84) – **UK10090218NR**
- 3 x 4 m (2,84 x 3,84) – **UK10090219**
- 4 x 3 m (3,84 x 2,84) – **UK10090220N**
- 4 x 4 m (3,84 x 3,84) – **UK10090221N**
- 4 x 5 m (3,84 x 4,84) – **UK10090222**
- 5 x 4 m (4,84 x 3,84) – **UK10090223N**
- 5 x 5 m (4,84 x 4,84) – **UK10090224**

Basement size is shown in brackets.

- Wall thickness 44 mm T&G;
- Wall Boards are flat faced with softly rounded edges;
- Double glazed door and windows;
- The corbel of the roof around the whole house;
- The cabin includes the floor;
- Extra windows shutters available.



Log Cabins

Roofing shingles and veranda are supplied as optional extras. Note: Devon 3x3 m and 3x4 m has single window in front. This cabin available with a maximum ridge height of 2.5 m on special request.



(44 mm)

Roy

Hot tub cabin
Living area 12,4 m²



4x6 (3,82x5,85) – **UK100800401**
Basement size is shown in brackets.

- Wall thickness 44 mm;
- Double grooved interlock;
- Wall boards are flat faced with softly rounded edges;
- The corbel of the roof around the whole house;
- Veranda with large canopy 2,4 m;
- Double glazed windows and door;
- The doors and windows can be supplied either left, or right-hand;
- The cabin includes the roof and floor;
- Extra windows shutters available.



Log Cabins

Roofing shingles are supplied as optional extras.



(44 mm)

Rumus 4x3

34 mm - **UK28001090415**

44 mm - **UK2800109041544**

Basement size required: 3.84 x 2.84



- The cabin includes floor and roof boards - 20 mm T&G
 - There are one single window in the front and one on each side wall
 - Front and back canopy - 0.20 m / Side canopies - 0.30 m
 - Total high of the cabin ~ 2,5 m.
- Planning permission is not necessary in UK.

*Rumus 4x3 in 44 mm comes with double glazed windows and door
*Roofing shingles are supplied as optional extras



(34 mm)

(44 mm)

Rumus 5x4

34 mm - **UK2800109031534**

44 mm* - **UK28001090315**

Basement size required: 4.84 x 3.84



- The cabin includes floor and roof boards - 20 mm T&G
 - There are one double window in the front and one on each the side wall
 - Front and back canopy - 0.20 m / Side canopies - 0.30 m
 - Total high of the cabin ~ 2,5 m.
- Planning permission is not necessary in UK.

*Rumus 5x4 in 44 mm comes with double glazed windows and door
*Roofing shingles are supplied as optional extras



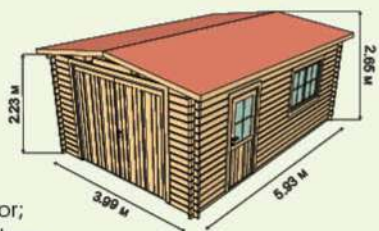
(34 mm)

(44 mm)

Garage

Garage 4 x 6 m WG – **UK94060008**
with wooden gates

- Wall boards are flat with softly rounded edges;
- Double grooved interlock;
- Glazed window and door;
- The doors and the windows can be supplied either left, or right-hand;
- Garage is supplied without the floor;
- Wooden gates included in the package.



(44 mm)

Plymouth



- 4x4 (3,84*3,84) – **UK10090217NT**
 - 4x5 (3,84*4,84) – **UK10090212**
 - 5x4 (4,84*3,84) – **UK10090215NT**
 - 5x5 (4,84*4,84) – **UK10090214NT**
- Basement size is shown in brackets.

- Wall thickness 68 mm T&G;
- Wall boards are flat faced with softly rounded edges;
- Triple grooved interlock;
- The corbel of the roof around the whole house;
- Double glazed windows and single door;
- The cabin includes the floor



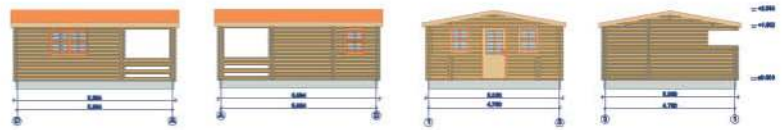
Roofing shingles supplied as optional extras.



(68 mm)

Gorbea 5x5,9

5x5,9 (4,83x5,73) – **UK680010**

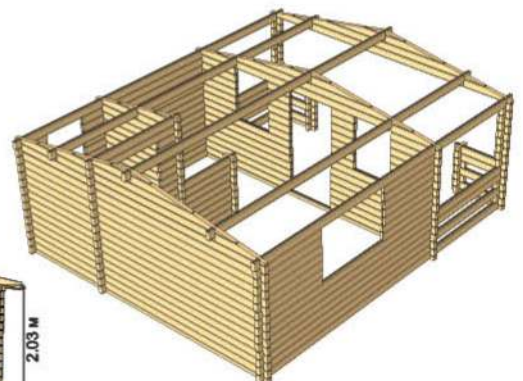
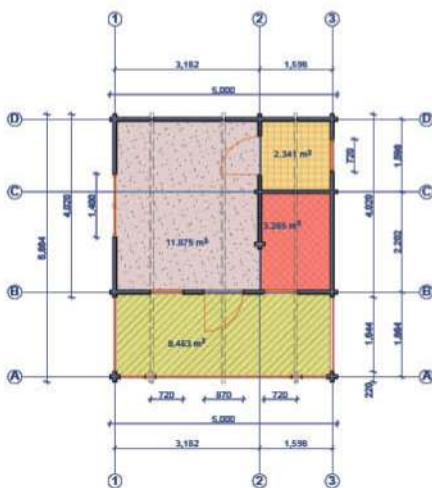


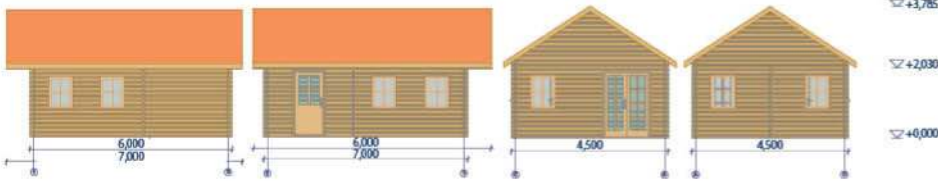
- Wall Boards are flat faced with softly rounded edges;
- Triple grooved interlock;
- The corbel of the roof around the whole cabin;
- Terrace;
- Double Glazed windows and door with ventilation function;
- The cabin includes the floor and roof construction;
- Bitumens shingles supplied as an optional extra.

Living area 17,5 m²



(68 mm)





Log Cabins

Nottingham

4,5x6 (4,33x5,85) – **UK10050102N**

Basement size is shown in brackets (without veranda).

optional extras:

UK10050102V - veranda

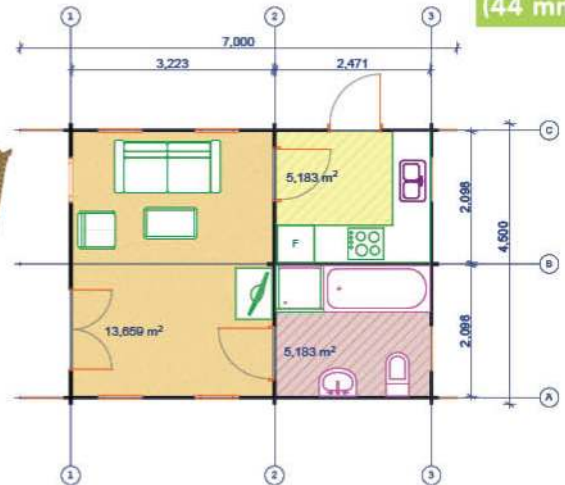
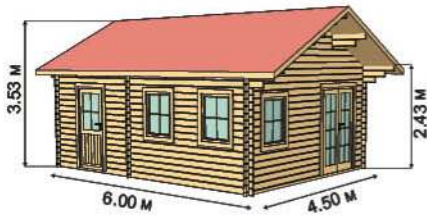
UK10050102S - shutters for windows

- Wall thickness 44 mm;
- Double grooved interlock;
- Wall boards are flat faced with softly rounded edges;
- The corbel of the roof around the whole house;
- Canopy – 0,8 m;
- Double glazed windows and door;
- The doors and windows can be supplied either left, or right-hand;
- Big bedroom in the attic;
- Two separate rooms.

Living area 24 m²



(44 mm)



The cabin includes the floor.

Roofing shingles are supplied as optional extras.

Manchester

4 x 5,85 m (3,84 x 5,69) – **UK10080100NT**

Basement size is shown in brackets.

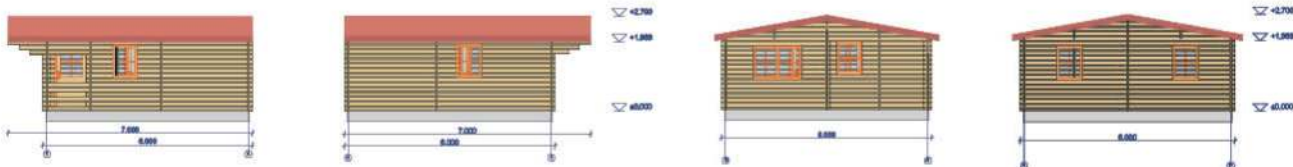
- Wall thickness 68 mm T&G;
- Wall boards are flat faced with softly rounded edges;
- Triple grooved interlock;
- The corbel of the roof around the whole house;
- Terrace included;
- Double glazed windows and door;
- The cabin includes the floor.



Roofing shingles supplied as optional extras.



(68 mm)



Fay 6x6

6x6 (5,823x5,823) - **UK10080040**

Basement size is shown in brackets.

Fay with double roof construction - **UK10080041**

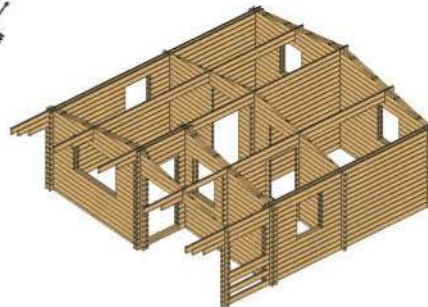
- Wall thickness 44 mm;
- Double grooved interlock;
- Wall boards are flat faced with softly rounded edges;
- The corbel of the roof around the whole house;
- Large canopy – 1 m;
- Veranda with canopy 1,9 m;
- Double Glazed windows and doors;
- The doors and windows can be supplied either left, or right-hand;
- The cabin includes the roof and floor.

Living area 29 m²

Possible furnishing: 2 Bedrooms, WC/Bath, Kitchen, Hall.

Double roof supplied as optional extras.

Shutters and bitumen shingles are supplied as optional extras.



Royal 6x6

6x6 (5,823x5,823) - **UK10080060**

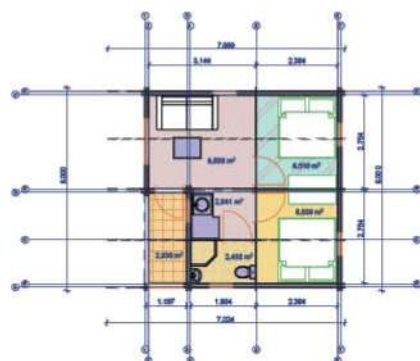
Basement size is shown in brackets.

- Wall thickness 44–50–44 mm;
- Double grooved interlock;
- Wall boards are flat faced with softly rounded edges;
- The corbel of the roof around the whole house;
- Large canopy – 1 m;
- Veranda with canopy 1,9 m;
- Double Glazed windows and doors;
- The doors and windows can be supplied either left, or right-hand;
- The cabin includes the floor and double roof construction.

Living area 27 m²

Possible furnishing: 2 Bedrooms, WC/Bath, Kitchen, hall.

Shutters and bitumen shingles are supplied as optional extras





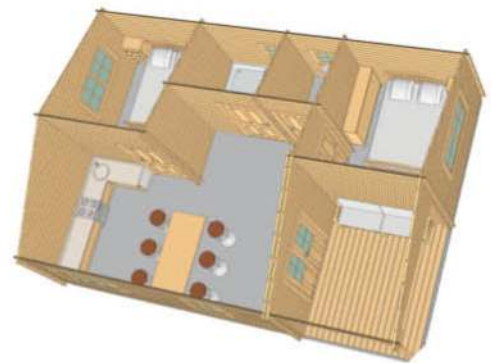
Lora

6x8,5 (44 mm) – **UK10080043**

Basement size is shown in brackets.



- Wall thickness 44 mm;
- Double grooved interlock;
- Wall boards are flat faced with softly rounded edges;
- The corbel of the roof around the whole house;
- Veranda with canopy 1,9 m;
- Double Glazed windows and doors;
- The doors and windows can be supplied either left, or right-hand;
- The cabin includes the roof and floor.



Living area 39,3 m²

Possible furnishing: 2 Bedrooms, WC/Bath, Kitchen, Hall.

*Double roof supplied as optional extras.
Shutters and bitumen shingles are supplied as optional extras.*





Katryn

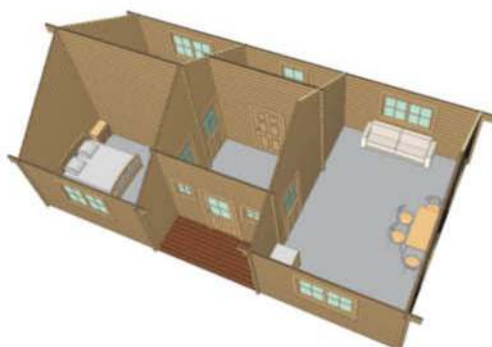
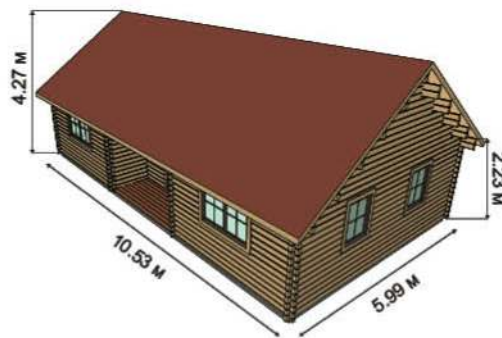
11x6 (10,355x5,824) - **UK10080034**

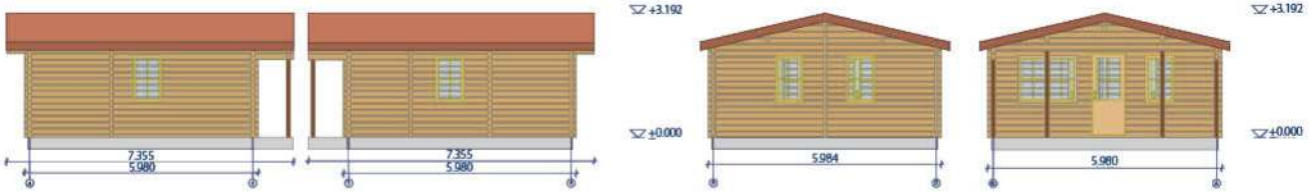
Basement size is shown in brackets.

- Wall thickness 44 mm;
- Double grooved interlock;
- Wall boards are flat faced with softly rounded edges;
- The corbel of the roof around the whole house;
- Double glazed windows and door;
- The cabin includes the floor.

Living area 53,7 m²

* Bitumen shingles and Shutters are supplied as optional extras





(68 mm)

Baltic

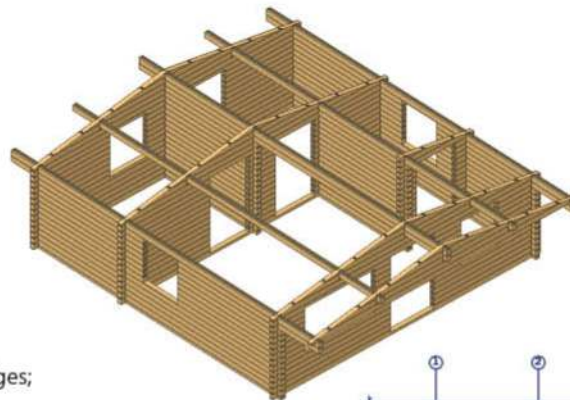
6x6 m (5,85x5,85) - **UK1006810A**

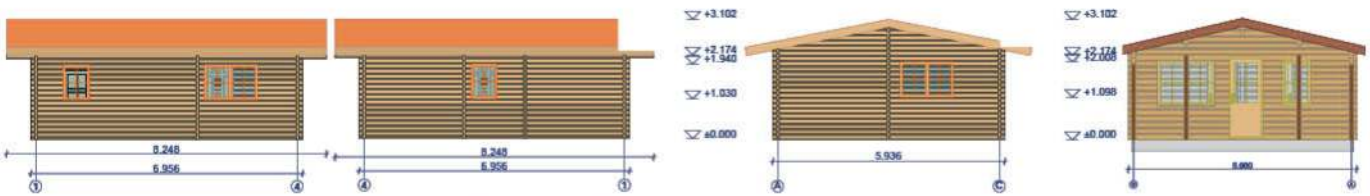
Basement size is shown in brackets.

- Wall thickness 68 mm;
- Triple grooved interlock;
- Wall boards are flat faced with softly rounded edges;
- The corbel of the roof around the whole house;
- Terrace is included;
- Double glazed windows and door;
- The cabin includes the roof;
- Double roof construction included;
- Floor boards 26 mm thickness.

Living area 30,7 m²

Roofing shingles are supplied as optional extras.





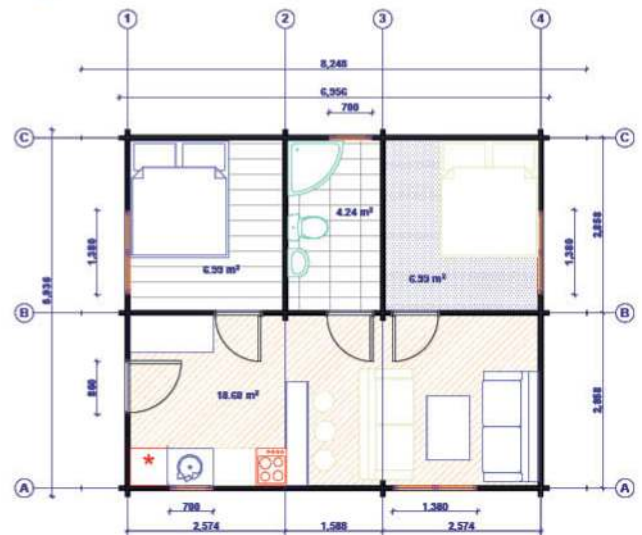
Bristol

6x7 m (5,85x6,85) - UK10050070
Basement size is shown in brackets.

- Wall thickness 68 mm;
- Triple grooved interlock;
- Wall boards are flat faced with softly rounded edges;
- The corbel of the roof around the whole house;
- Double glazed windows and door;
- The cabin includes the roof;
- Double roof construction included;
- Floor boards 26 mm thickness.

Living area 36,8 m²

Roofing shingles and veranda
are supplied as optional extras.



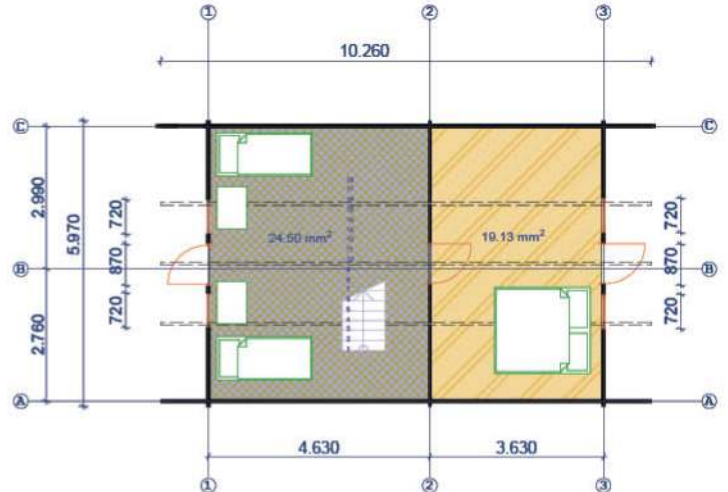


(68 mm)

LINCOLN 85 sq.m

ground floor

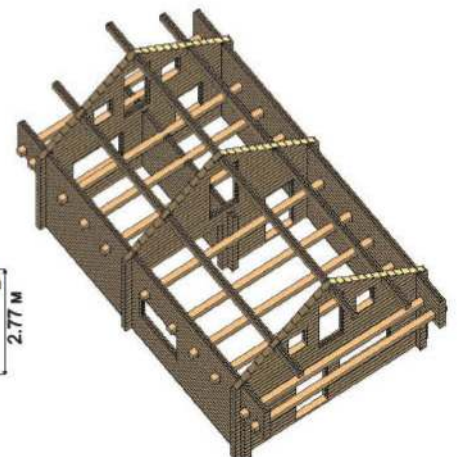
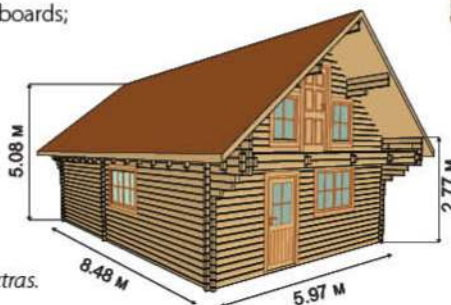
first floor



Two Storey Log Cabin 85 m²

6x9 m (5,85x8,75) - **UK10050040**

- Wall thickness 68 mm T&G;
- Roof cover - external - plywood, internal - planed boards;
- Floors - 26 mm thickness;
- The corbel of the roof around the whole house;
- Double glazed windows and doors;
- Roof area - 110 sq.m;
- Stairs included;
- Double roof construction included.



Roofing shingles and veranda are supplied as optional extras.

Bitumen Tiles

Bourne
Green



UK431-1001

Grey



UK433-1060

Red



UK432-1029

Hexham
Green



UK421-1611

Ridge/Egde Green tiles - 0001

Grey



UK423-1610

Ridge/Egde Grey tiles - 0022

Red



UK422-0822

Ridge/Egde Red tiles - 0025

One pack usual tiles contains 3 m²

One pack Ridge/edge tiles contains - 5 m², cover 20 linear m of roof edge or 12 m of ridge.

Accessories



Kit of shutters for

3 m wide cabins - **UK10050102V3X**

4 and 5 m wide - **UK10050102V5X**

Shutters for Nottingham - **UK10050102S**



Please ask whether shutters will fit for your cabin.



*style of veranda may vary depending on certain cabin model.



(34 mm)

34 mm Verandas for Brighton, Luton, Wales
Veranda for 3 m wide cabin - **UK10048910**
Veranda for 4 m wide cabin - **UK10048920**
Veranda for 5 m wide cabin - **UK100489h20WT**

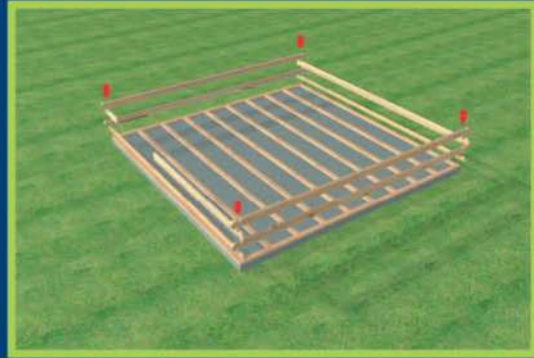


(44 mm)

44 mm Veranda for Nottingham - **UK10050102V**

44 mm Verandas for Devon, Liverpool
Veranda for 3 m wide cabin - **UK10050103**
Veranda for 4 m wide cabin - **UK10050104**
Veranda for 5 m wide cabin - **UK10050105**

Assembly guide



**Garden Adventure Ltd**
19 Manor Road
East Grinstead
West Sussex RH19 1LP
01342 300146
www.gardenadventure.co.uk